

User Guide of WU106N

Page 1 - Installing the software

Page 2 - Installing the software of USB Adapter

Page 6 - Configuring your wireless network (with Wireless Utility)

Page 6 - Directly Connect

Page 9 - Add to Profile

Page 13 - Configuring your wireless network (with Microsoft Zero Configuration Tool)

Page 14 - Wi-Fi Protect Setup (WPS)

Page 14 - Pin Input Config (PIN)

Page 21 - Push Button Config (PBC)

Page 23 - Uninstalling the software

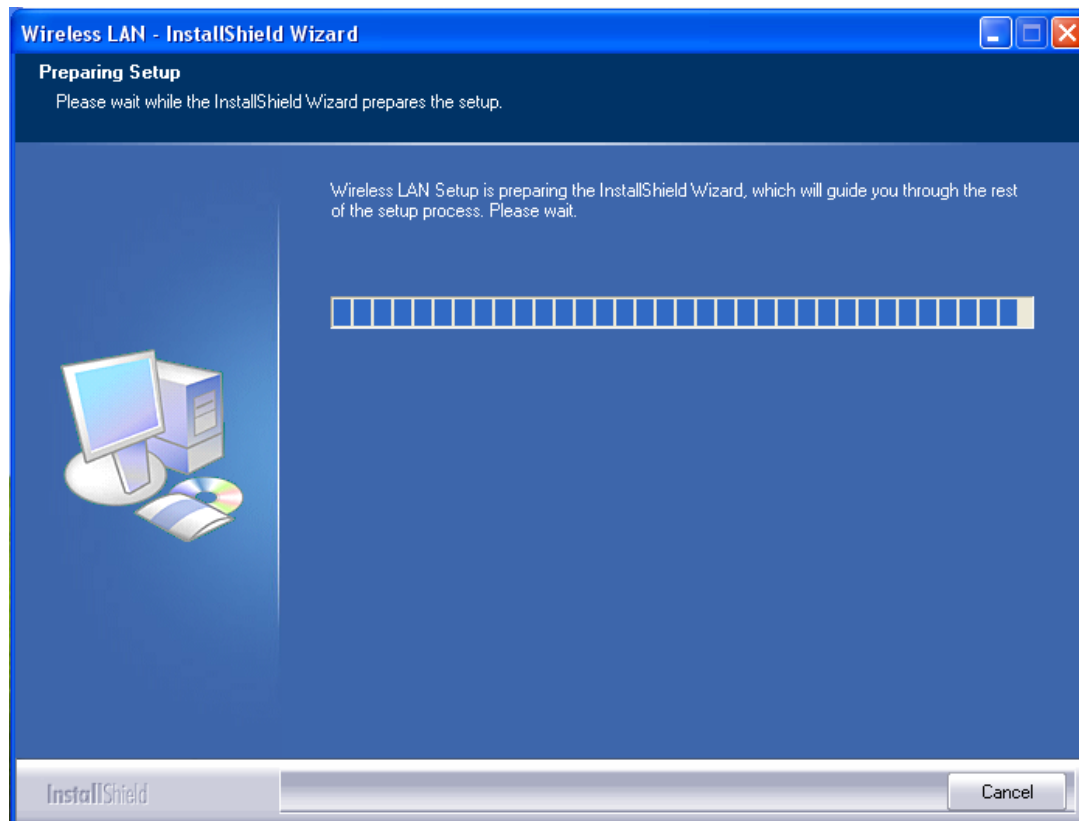
Installing the software

1. After installing the hardware to your system. You may turn on your system.
2. When Windows is loading, it will pop up a window "Found New Hardware Wizard". Click the "Cancel" button.



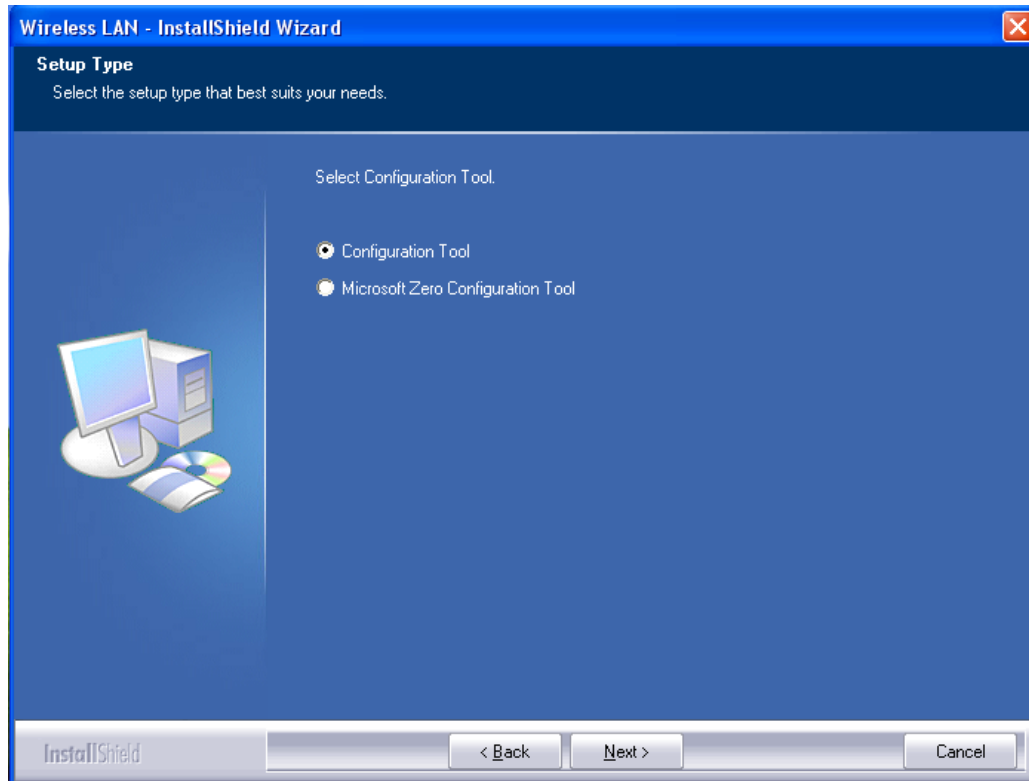
Installing the software of USB Adapter

1. Select the setup file to install.

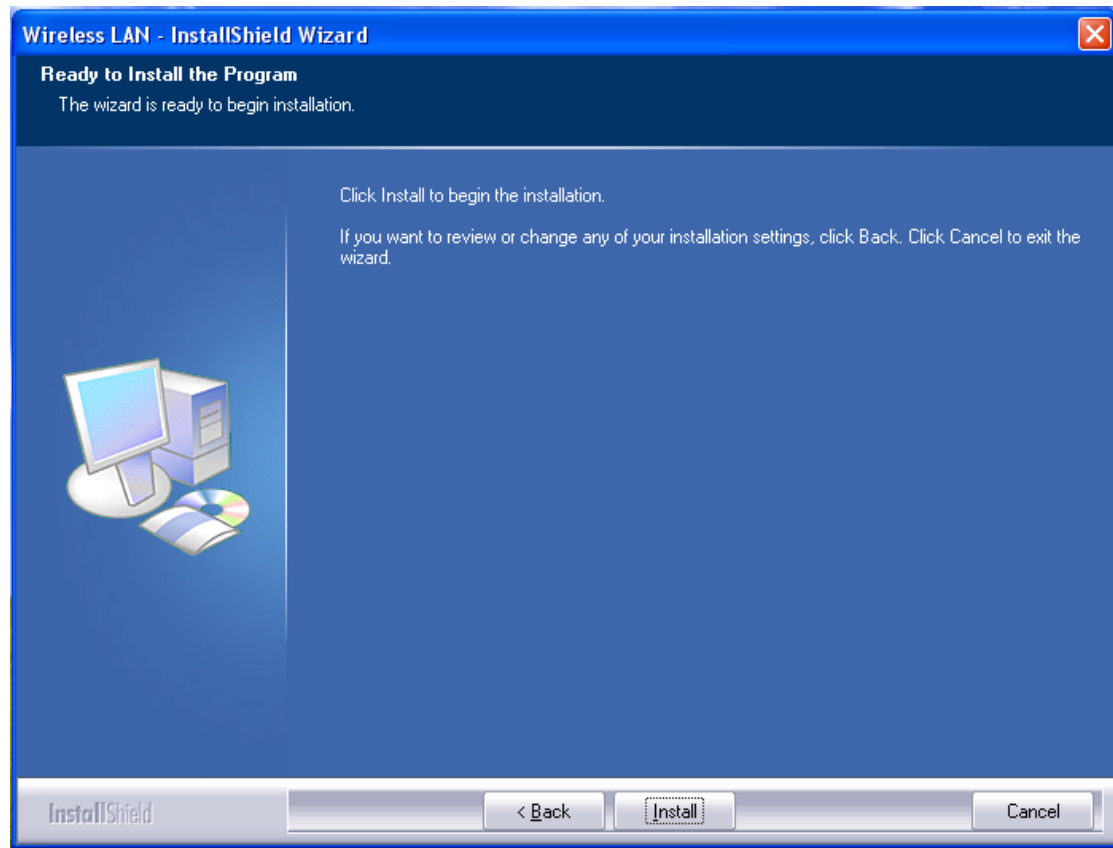


2. The setup program will ask to select configuration tool. Please choose "Configuration Tool" and then click the "Next" button.

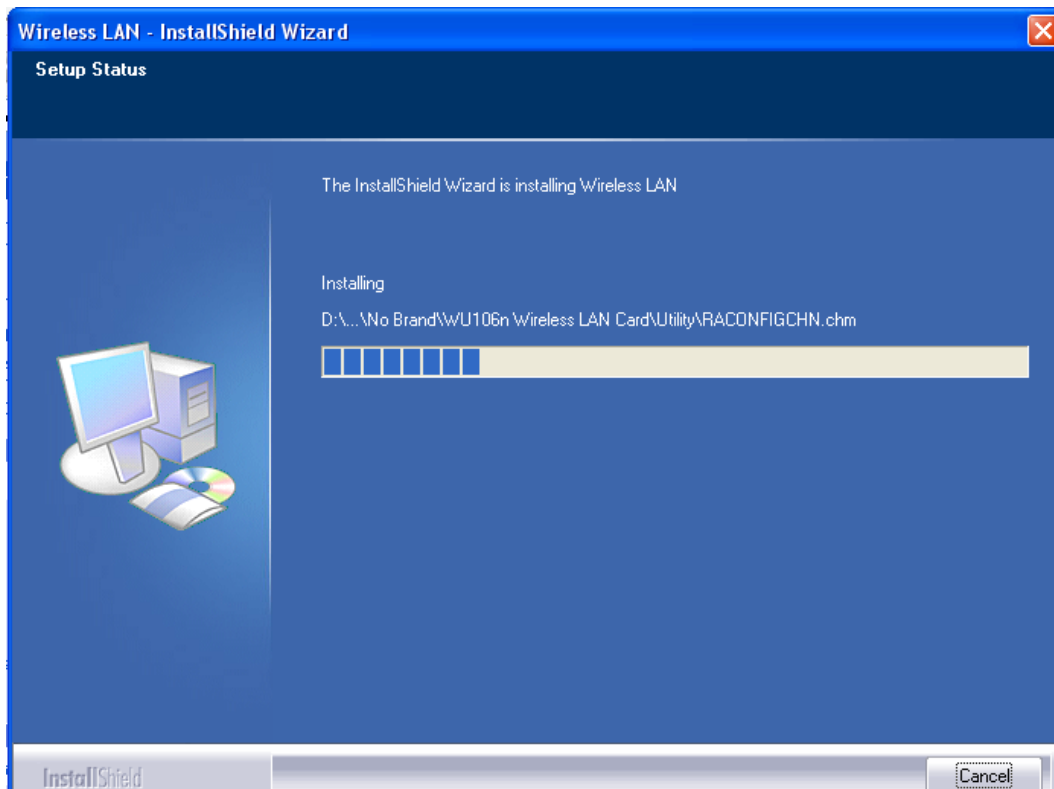
Note: If you want to use "Microsoft Zero Configuration Tool" to be your default configuration tool, please choose "Microsoft Zero Configuration Tool".



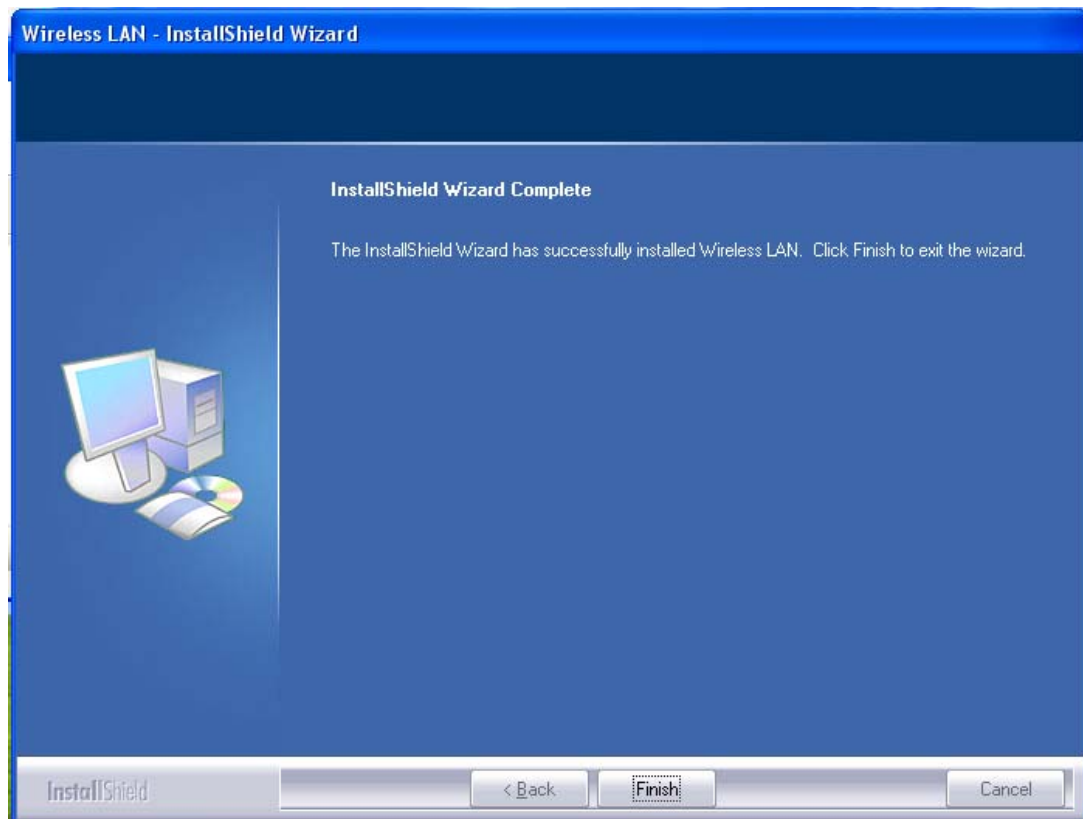
3. The setup program is ready to begin installation. Please click the "Install" button.



4. The software installation should begin. This may take a few minutes.



5. Once the installation success, click the "Finish" button to exit the setup program.



6. Once the installation has successfully, you may now configure your wireless network.

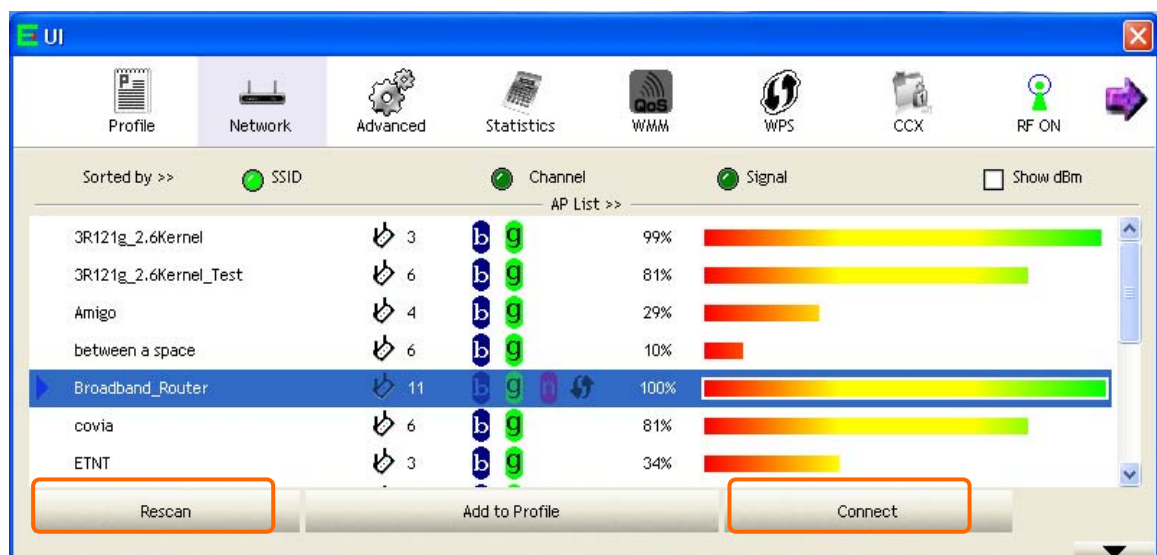
Configuring your wireless network (with Wireless Utility)

Directly Connect

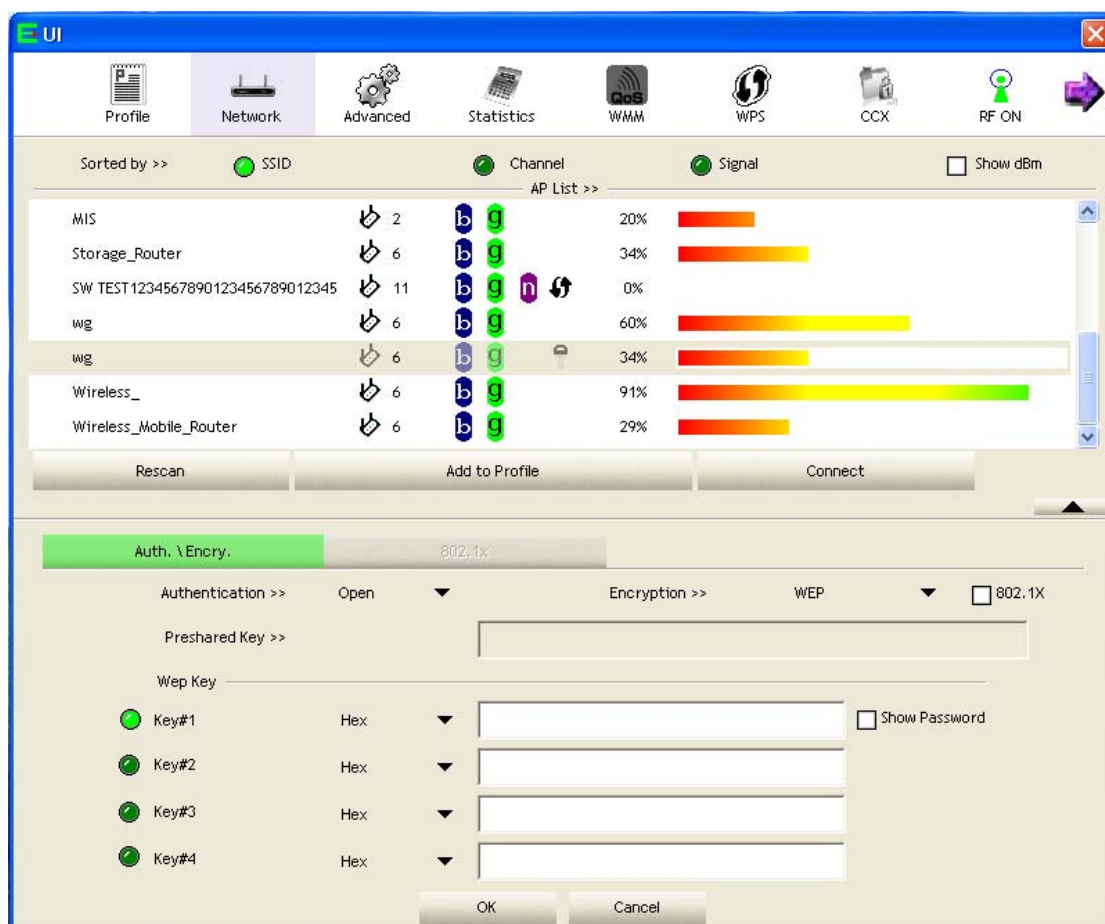
1. Double click on the computer with wireless signal “E” icon in your taskbar.



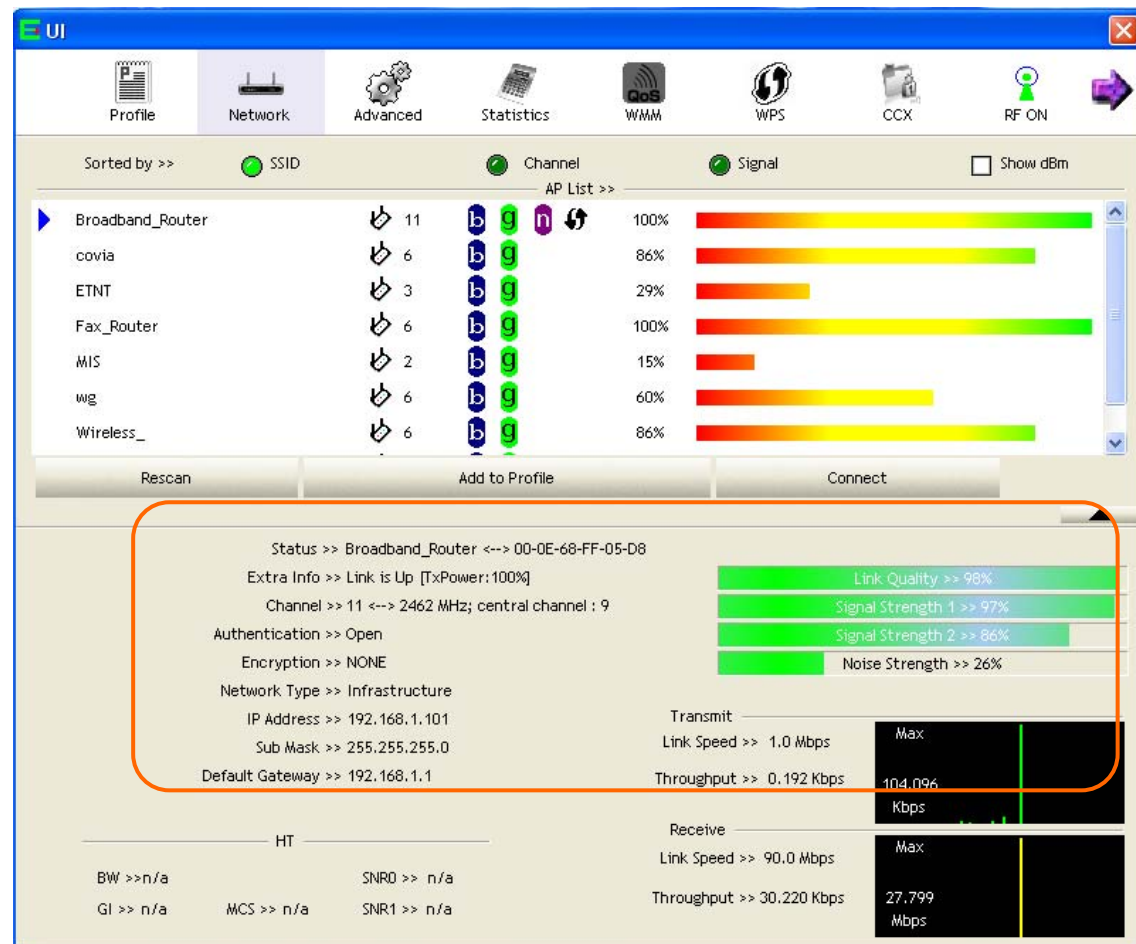
2. The Wireless Utility window should pop up. Please click the “Rescan” button to update available APs. Once the “Rescan” completed, select the wireless network from the list and click the “Connect” button.



3. If the wireless network has wireless security settings, it will prompt you to type in the wireless network key. Enter password in the text of your encryption type. And then please click the "OK" button to continue. If your wireless network does not have any security settings enabled, skip to step 4.
 - If you have WEP, typically you only enter your WEP key in Key#1.
 - If you have WPA-PSK or WPA2-PSK, typically you only enter your key in the "Preshared Key".
 - If you have 802.1x configure, typically you only configure your setting in 802.1x configure column.



- Once the wireless network show the following figure, which means you have successfully connected to your wireless network. The show up window will show the information of connecting wireless network.

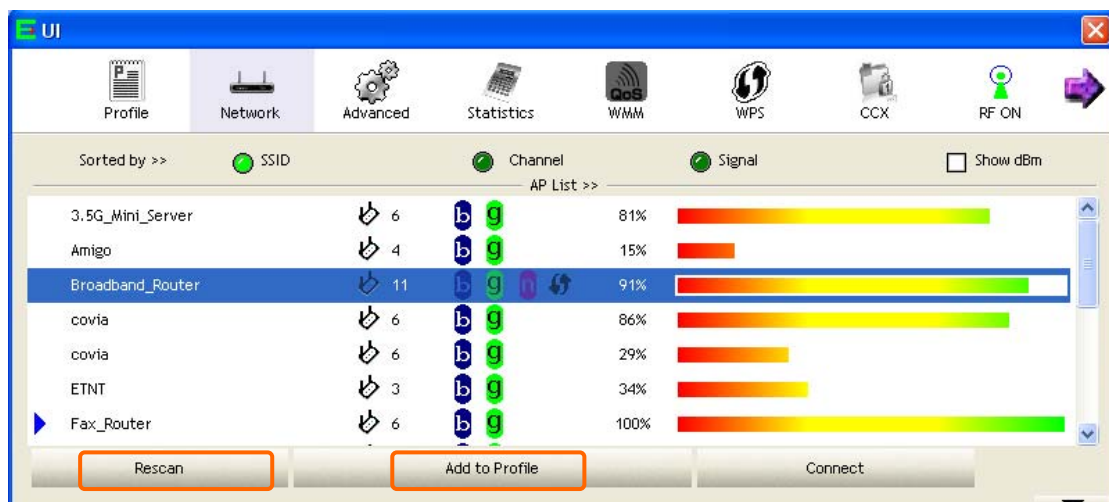


Add to Profile

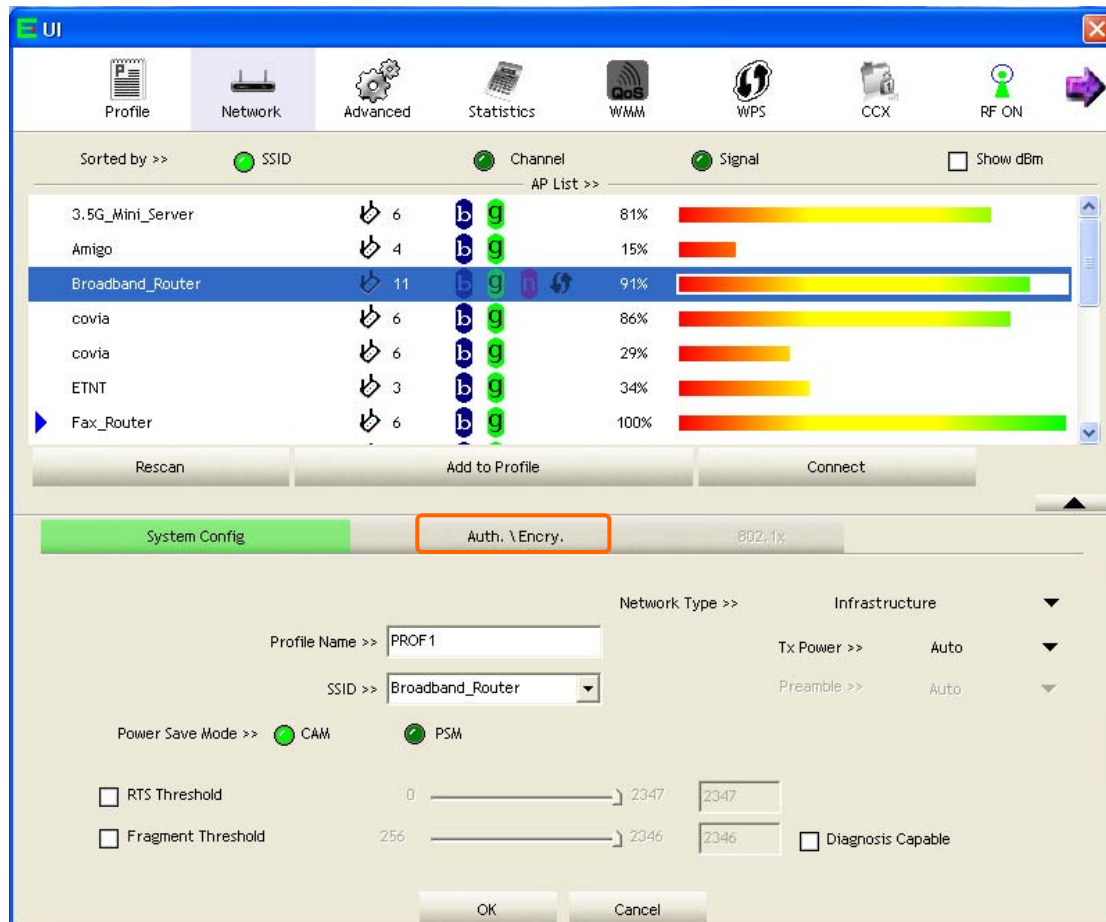
1. In your taskbar, locate a small “E” icon, double click on it.



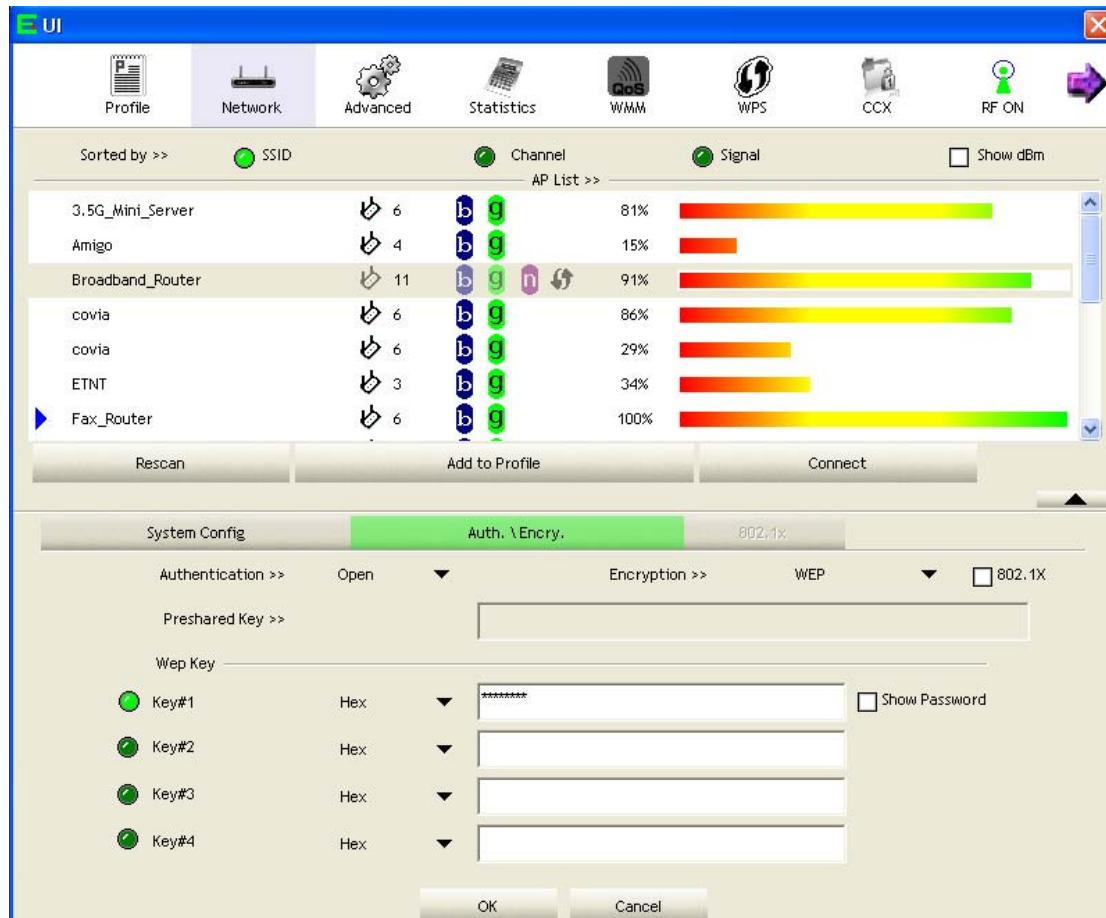
2. It should pop up the Wireless Utility window. First, click on the “Rescan” button to update available APs. Once the scan complete, select the desired wireless network from the list and click “Add to Profile” button. After the desired wireless network has chosen, this line’s color will become blue.



- It should show up the Profile window below. If you do not have any wireless security (WEP, WPA, WPA2, and etc.) set on your wireless network, simply click the "OK" button and skip to step5. If you do have wireless securities on your wireless network click on the "Auth. \ Encry." tab.

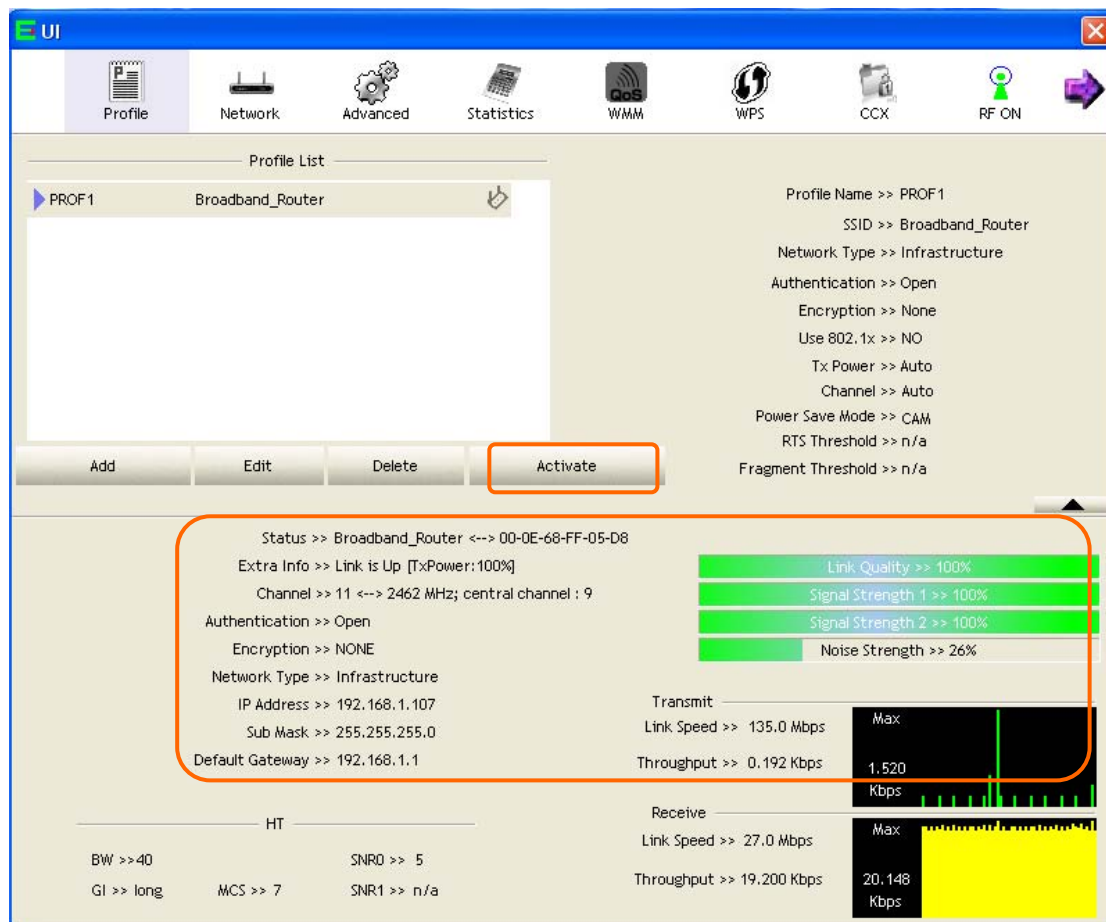


4. Set your wireless securities settings, when completed, click the OK" button.
 - If you have WEP, typically you only enter your WEP key in Key#1.
 - If you have WPA-PSK or WPA2-PSK, typically you only enter your key in the "Preshared Key".
 - If you have 802.1x configure, typically you only configure your setting in 802.1x configure column.



5. You should see the profile you created and the information of this profile beside. Select on the profile and click the “Activate” button to establish a wireless connection. The below window indicates you’re connected.

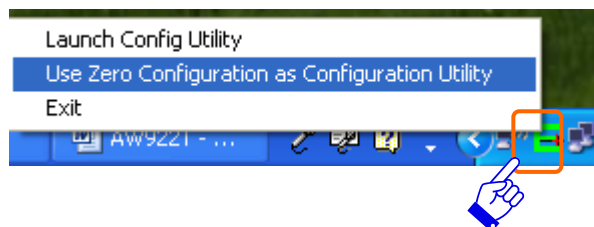
Note: We recommend Windows 98 SE and ME users to restart their system after they activated their profile.



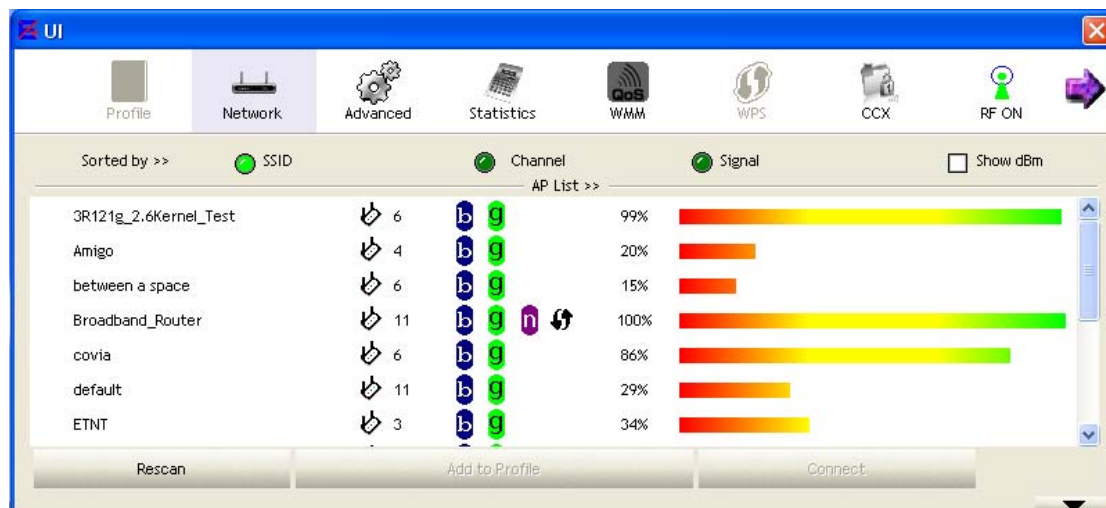
Configuring your wireless network (with Microsoft Zero Configuration Tool)

Warning: Due to security reasons, we strongly recommend updating Windows XP to service pack 2 and above, if you have not done so. If you do not wish to update, please use the Wireless Utility by right clicking on the taskbar icon and selecting “Use E-Config as Configuration Utility”.

1. Right click on the computer with wireless signal “E” icon in your taskbar. And then choose the “Use Zero Configuration as Configuration Utility”.

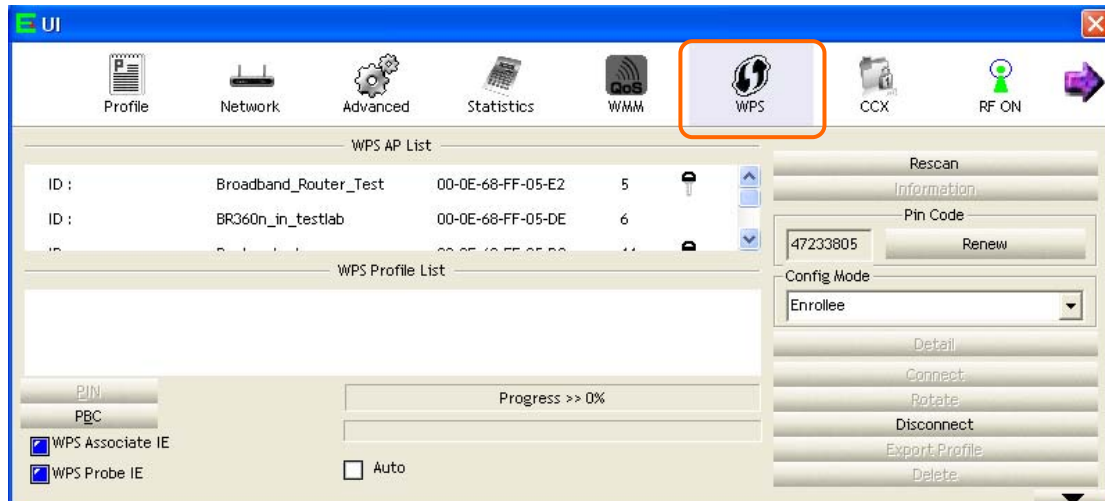


2. Once using Microsoft Zero Configuration Tool to configure wireless network, UI will be can not configure.



Wi-Fi Protect Setup (WPS)

WPS is an easy and secure setup solution for Wi-Fi network. Please click the "WPS" tab. WU106n has two methods, PIN (Pin Input Config) and PBC (Push Button Config), to setup the network.



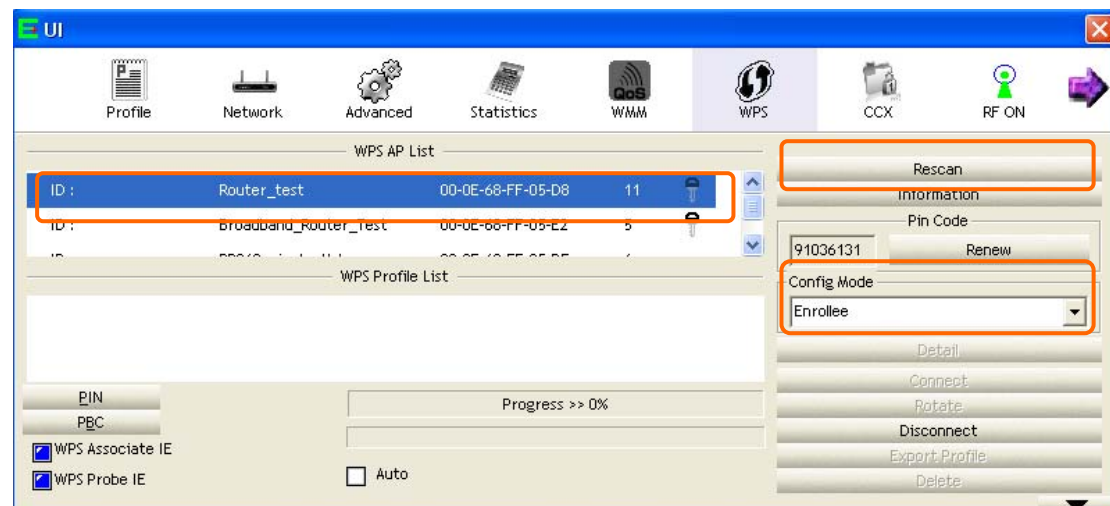
Pin Input Config (PIN)

PIN method has two configuration mode, Enrollee mode and Registrar mode.

Enrollee Mode

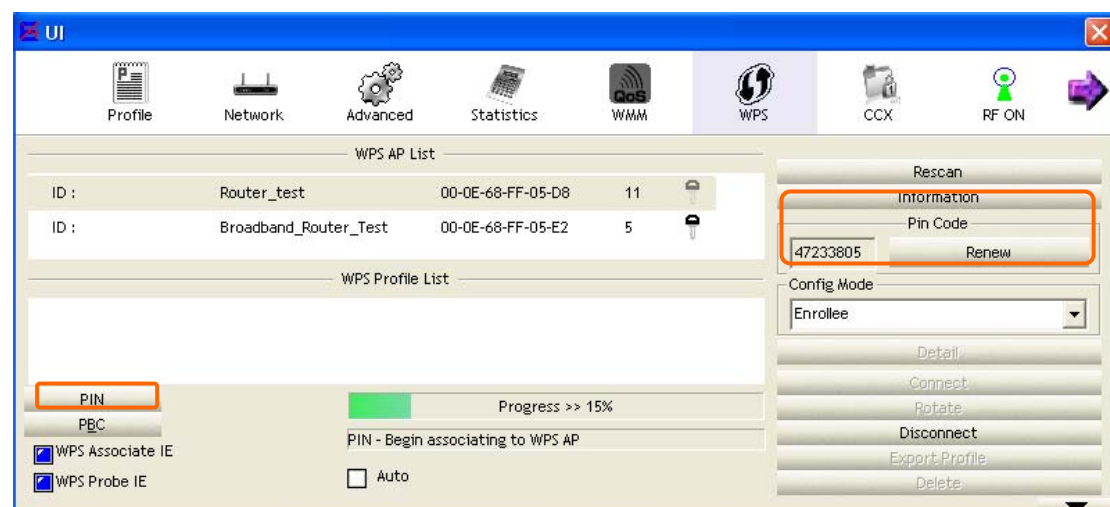
1. Select "Enrollee" from the Config Mode drop-down list. Select an AP (SSID/BSSID) that you will join to and this AP is a registrar AP.

Note: If you can't find an AP that you want to join, please click the "Rescan" button to update available WPS APs.



2. Click on the "PIN" button and wait for registrar AP to establish the connection.

Note: Note the Pin Code and enter it to registrar AP. If you want to refresh the Pin Code, please click the "Renew" button.



3. Enter the PIN code into registrar AP. For example, the AP uses BR360n to be the connecting device. Enter the PIN code into client pin number and then clicks the "Start PIN" button.

Note: The PIN function in registrar AP should be started before the WPS setup in WU106n times out.

Wi-Fi Protected Setup

This page allows you to change the setting for WPS (Wi-Fi Protected Setup). Using this feature could let your wireless client automatically synchronize its setting and connect to the Access Point in a minute without any hassle.

☐ Disable WPS

WPS Status: ☒ Configured ☐ UnConfigured

Self-PIN Number: 58652459

Push Button Configuration:

Start PBC

Apply Changes

Reset

Current Key Info:

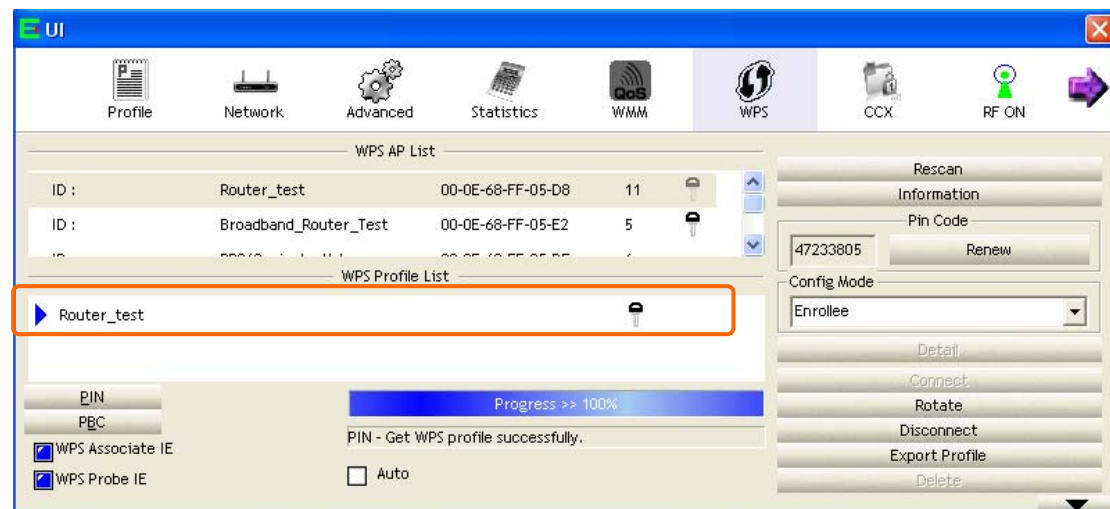
Authentication	Encryption	Key
WPA2 PSK	AES	1234567890

Client PIN Number:

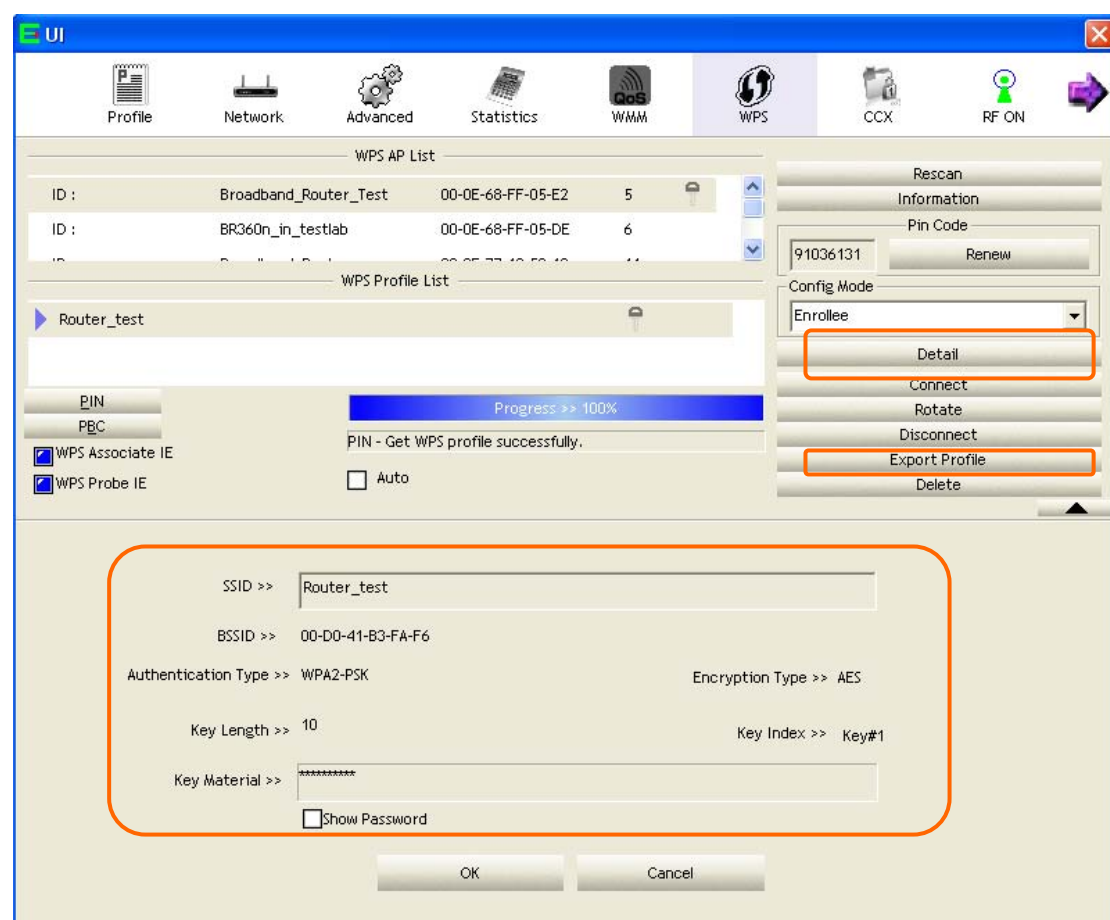
47233805

Start PIN

- Once the WPS connect successfully, the utility will show as the below image. The registrar AP's profile will appear in "WPS Profile List" column.



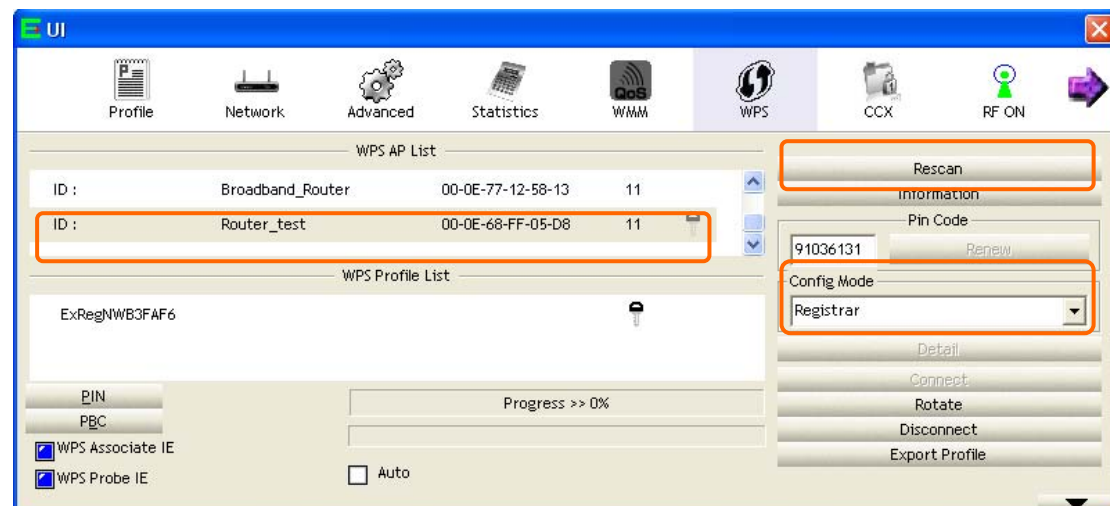
- Click the "Detail" button to see the detail of the registrar AP information. If you want to export this wireless network's profile, please click the "Export Profile" button.



Registrar Mode

1. Select "Registrar" from the Config Mode drop-down list. Select an AP (SSID/BSSID) that you will join to and this AP is an enrollee AP.

Note: If you can't find an AP that you want to join, please click the "Rescan" button to update available WPS APs.



2. Note the PIN Code in enrollee AP and enter it into WU106n.

Wi-Fi Protected Setup

This page allows you to change the setting for WPS (Wi-Fi Protected Setup). Using this feature could let your wireless client automatically synchronize its setting and connect to the Access Point in a minute without any hassle.

☐ **Disable WPS**

WPS Status: ☒ Configured ☐ UnConfigured

Self-PIN Number: 58652459

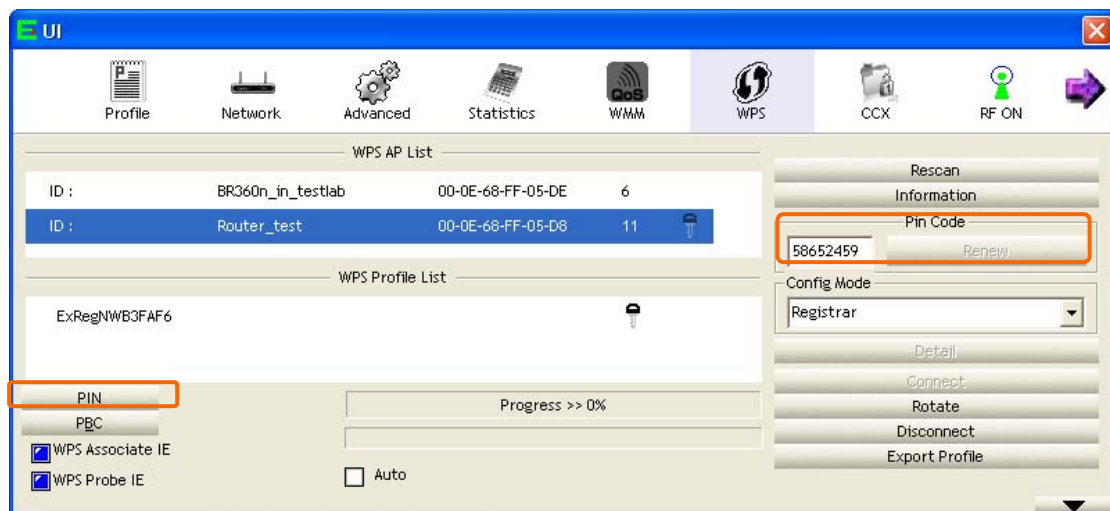
Push Button Configuration:

Current Key Info:

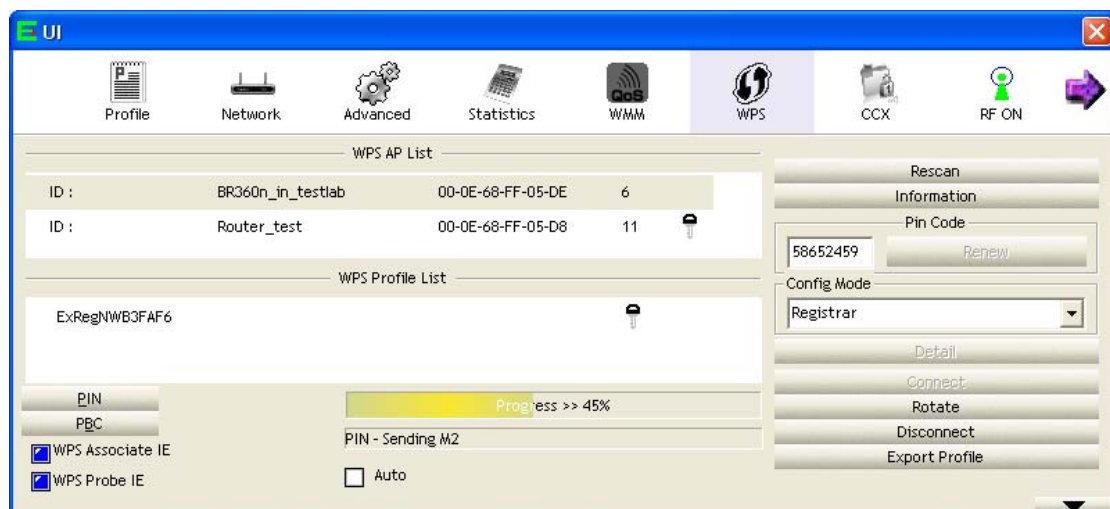
Authentication	Encryption	Key
WPA2 PSK	AES	1234567890

Client PIN Number:

3. Enter the PIN Code that from the enrollee AP into the "Pin Code" text.
Click the "PIN" button to start the PIN of WPS function.



4. Wait for both APs to establish the connection.



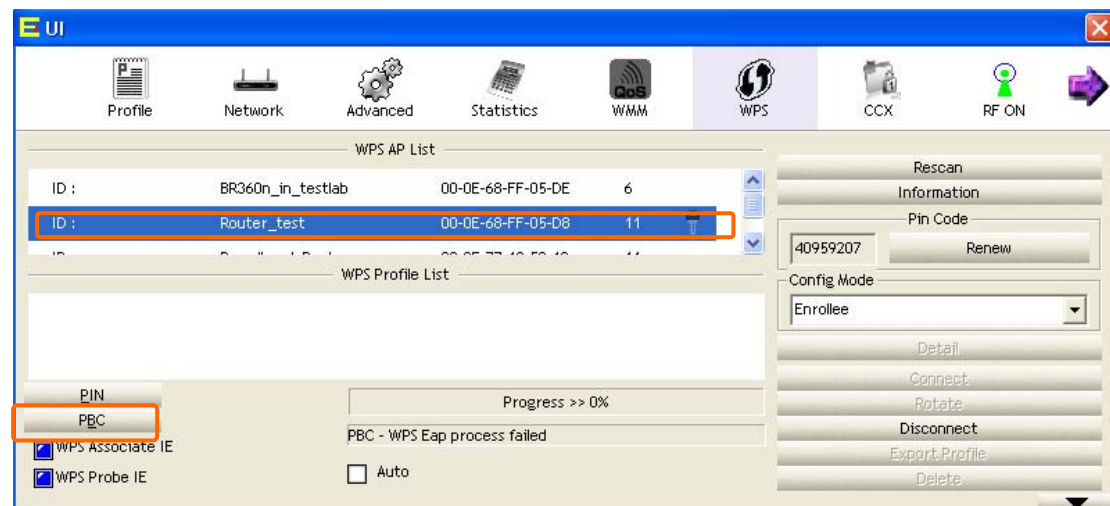
-
- The screenshot displays the WUI interface for WPS configuration. The 'WPS' tab is active. The 'WPS AP List' contains two entries: 'BR360n_in_testlab' with ID '00-0E-68-FF-05-DE' and 'Broadband_Router' with ID '00-0E-77-12-58-13'. The 'WPS Profile List' shows a profile named 'Router_test' highlighted with a red box. The 'PIN' method is selected, and the 'Progress' bar indicates 100% completion. The message 'PIN - Get WPS profile successfully.' is shown. The 'WPS Associate IE' and 'WPS Probe IE' checkboxes are checked. The 'Detail' button is visible on the right side.

-
- The screenshot displays the EUI WPS configuration interface. At the top, there is a blue header bar with the 'EUI' logo and a red close button. Below the header is a navigation bar with icons for Profile, Network, Advanced, Statistics, WMM, WPS, CCX, and RF ON. The WPS icon is highlighted.
- The main area is divided into two sections: 'WPS AP List' and 'WPS Profile List'. The 'WPS AP List' table shows two entries:
- | ID | Name | MAC | Index |
|-----------------------|-------------------|-----|-------|
| Broadband_Router_Test | 00-0E-68-FF-05-E2 | 5 | |
| BR360n_in_testlab | 00-0E-68-FF-05-DE | 6 | |
- The 'WPS Profile List' section shows a single entry: 'Router_test'.
- Below the lists, there are buttons for 'PIN', 'PBC', and 'WPS Associate IE' (checked). A progress bar indicates 'Progress >> 100%'. A message states: 'PIN - Get WPS profile successfully.' There is also an 'Auto' checkbox.
- On the right side, there is a 'Rescan' button and an 'Information' section. The 'Information' section includes a 'Pin Code' field with the value '91036131' and a 'Renew' button. Below this is a 'Config Mode' dropdown menu set to 'Enrollee'. A 'Detail' button is highlighted with an orange box. Other buttons include 'Connect', 'Rotate', 'Disconnect', 'Export Profile' (highlighted with an orange box), and 'Delete'.
- At the bottom, there is a large orange-bordered box containing the following configuration details:
- SSID >> Router_test
 - BSSID >> 00-D0-41-B3-FA-F6
 - Authentication Type >> WPA2-PSK
 - Encryption Type >> AES
 - Key Length >> 10
 - Key Index >> Key#1
 - Key Material >> *****
 - ☐ Show Password
- At the very bottom, there are 'OK' and 'Cancel' buttons.

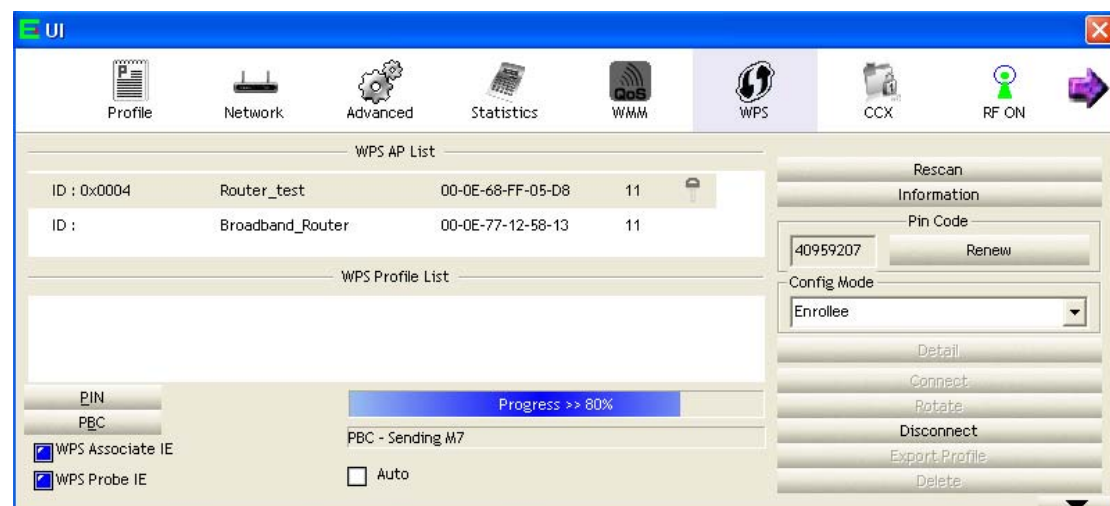
Push Button Config (PBC)

1. Select an AP (SSID/BSSID) that you will join to. And then click on the "Push Button Config (PBC)" button.

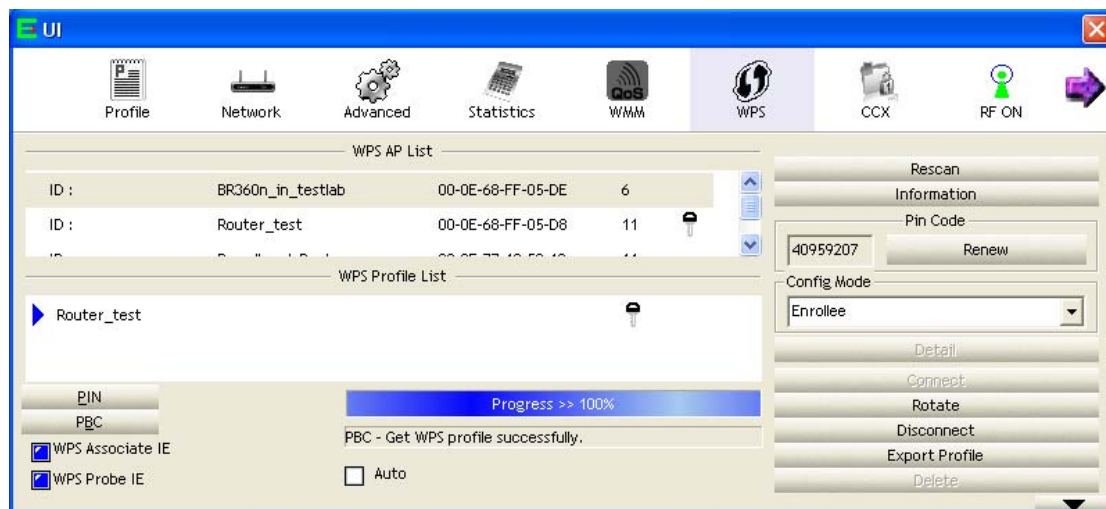
Note: The PBC button can click the visual button on the page or push the physical button on AP.



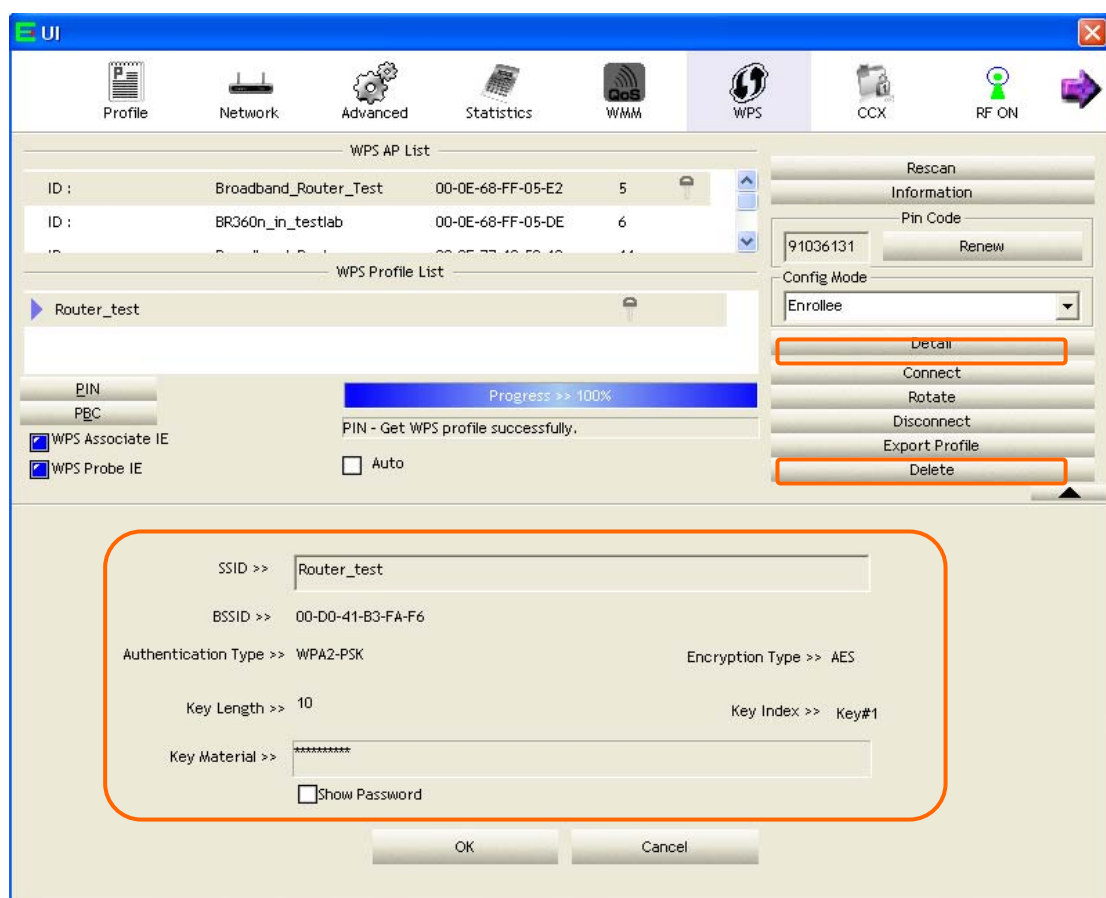
2. WU106n is waiting for the select AP to start the PBC function. The select AP starts the PBC function should be before WU106n WPS times out.



- Once WPS connect successfully, the Wireless Utility will show as the below image. The enrollee AP's profile will appear in "WPS Profile List" column.

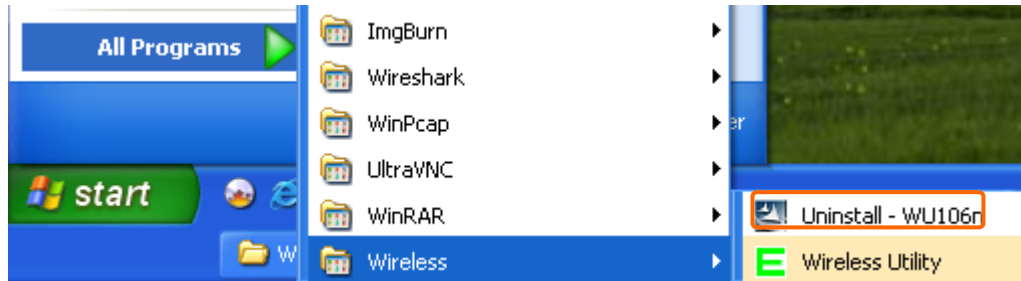


- Click the "Detail" button to see the detail of the registrar AP information. If you want to export this wireless network's profile, please click the "Export Profile" button.

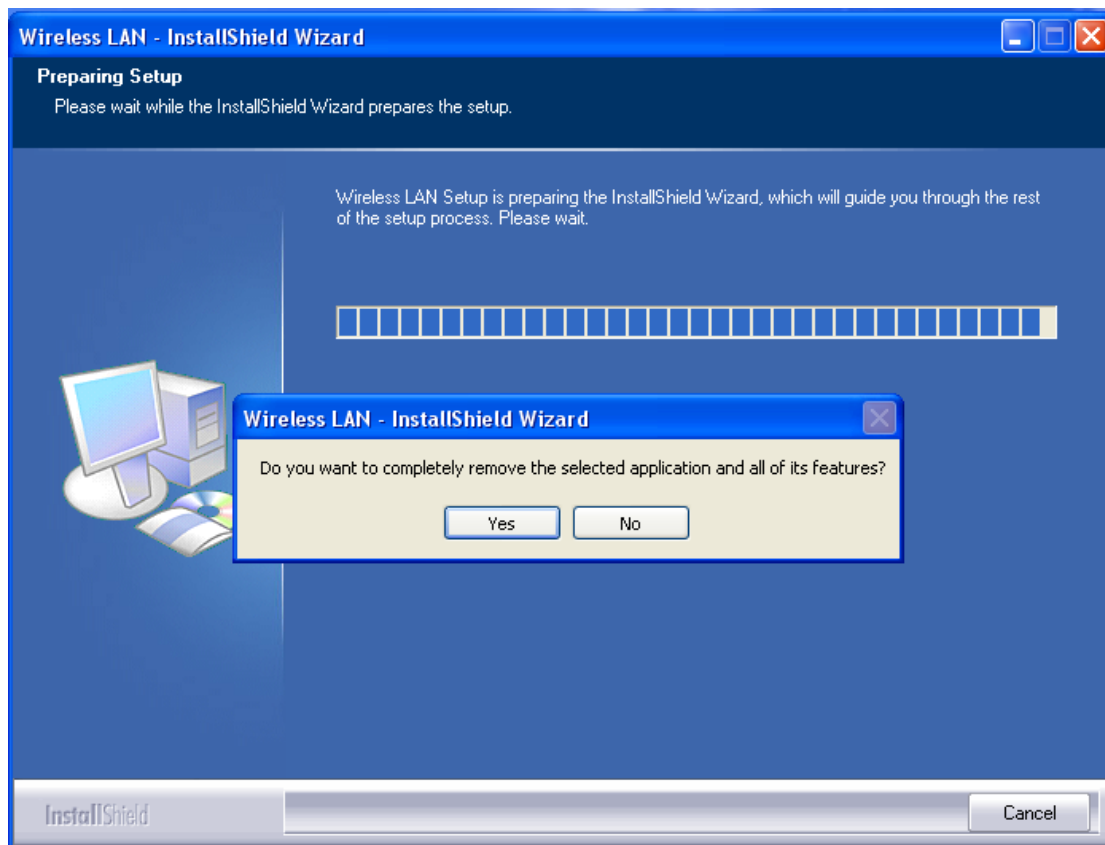


Uninstalling the software

1. Click on your start menu. Next go to "Programs" or "All Programs". Next go to the folder "Wireless". Next select "Uninstall –WU106n".



2. The uninstall window should pop up. Click on "Yes" button.



3. The uninstall process should begin and may take a few minutes. Once completed, click "Finish" to close the uninstall window.

